

Mini-ROBO Cylinder



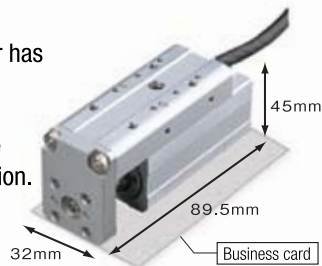
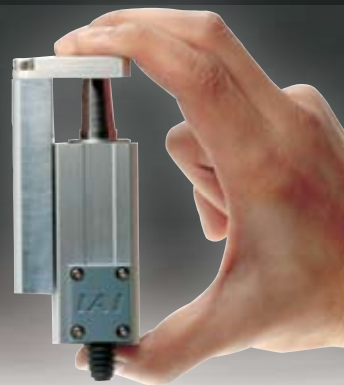
Next-generation Cylinders, Small is the New **Big** Mini-ROBO Cylinder



Space Saving

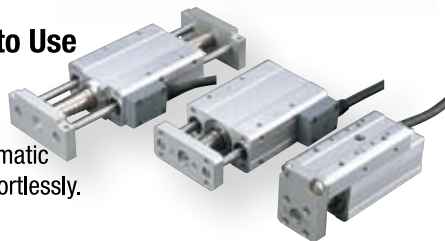
Incorporating a newly developed motor, the new ROBO Cylinder has achieved smaller size with significantly reduced overall length, width and height which are comparable to air cylinders. Systems that could only use air cylinders previously due to size constraints, can now benefit from IAI's electromechanical solution.

The tabletop type RCA2-TC3N has a footprint smaller than a business card.



Shaped Like an Air Cylinder and Easy to Use

The new ROBO Cylinder is available in shapes similar to that of air cylinders. Users who are comfortable with the handling and operation of pneumatic systems are now able to switch to ROBO Cylinder effortlessly.



Mini Slider Type

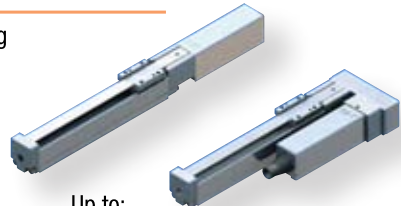
The slider on the body moves to perform positioning

Features:

- The motor can be replaced with ease
- The straight type (coupling) and reversing type with shorter length available

Applications:

- Moving a jig, work part transport, etc.



Up to:

- 300mm/s
- 150mm stroke
- 1kg load capacity

Mini Rod Type

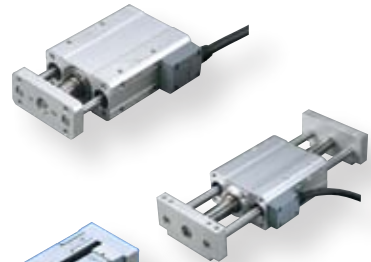
The rod extends/retracts to perform positioning and push-motion operations

Features:

- Significantly reduced overall length
- Guide types (for rigidity) and Non guide types are available in compact sizes

Applications:

- Moving a jig, work part transport, push, clamping, etc.



Up to:

- 300mm/s
- 150mm stroke
- 6kg load capacity



Mini Tabletop Type

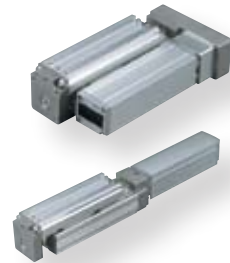
The table on the body moves to perform positioning

Features:

- The built-in guide allows overhang loads
- Compact body, Long stroke

Applications:

- Moving a jig, work part transport, horizontal move, push, etc.



Up to:

- 100mm stroke
- 6kg load capacity
- 300mm/s max. speed

Mini Linear Servo Type

High-speed lightweight parts transfer

Features:

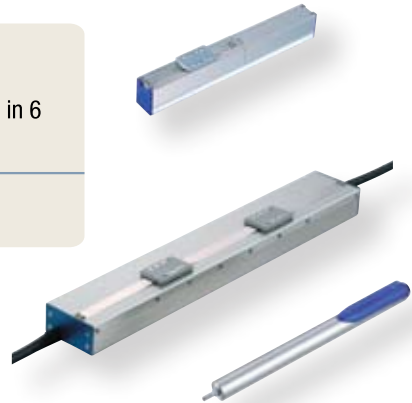
- The linear motor achieves high-speed (Accel. 2G)
- Both slider/rod types available. Slider type comes in 6 different models.

Applications:

- Transfer requiring short cycle times, etc.

Up to:

- 288mm stroke
- 3.2kg load capacity
- 1600mm/s max. speed



Controller

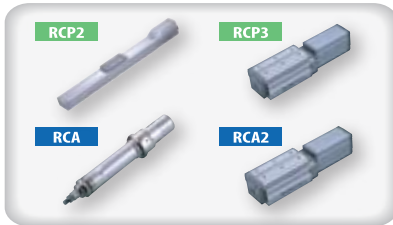
New PSEP/ASEP Controllers Designed Exclusively for 2 and 3-point Positioning



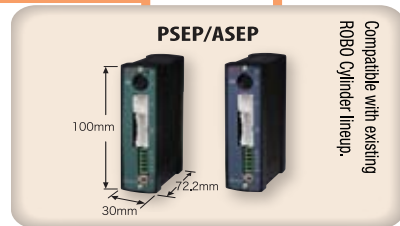
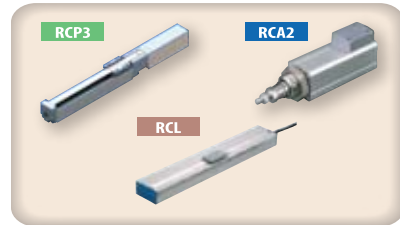
Unlike conventional controllers, the PSEP/ASEP controllers do not require many moving positions. These are "Simple, Easy Positioner" controllers suitable for applications where the actuator moves only between two or three points, which is usually the case with air cylinder systems.

If you have been using air cylinders and are unhappy with the long time needed to change the positions or want to stop the actuator between two points, you can adopt a ROBO Cylinder system and combine it with PSEP/ASEP controller. We also have a IP53 rated dust-proof type for installation near the actuator just like you would with solenoid valves.

Existing Models



New Mini-ROBO Cylinder



Operate Using the Same Signals Used for Air Cylinder Solenoid Valves

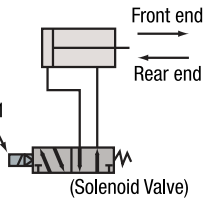
Operating Principle of PSEP/ASEP

The PSEP/ASEP can be operated with the same signals used for the solenoid signals of air cylinders. There are two types of solenoid valves: Single solenoids and double solenoids. The PSEP/ASEP can support signals for both types.

■ Solenoid Valve of an Air Cylinder

<Single Solenoid Type>

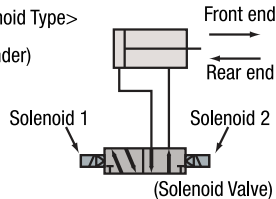
(Air Cylinder)



Signal to Solenoid 1	Rod Movement
ON	Front End
OFF	Rear End

<Double Solenoid Type>

(Air Cylinder)

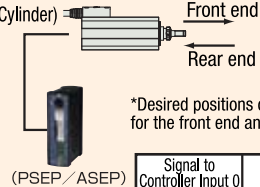


Signal to Solenoid 1	Signal to Solenoid 2	Rod Movement
ON	OFF	Front End
OFF	ON	Rear End

■ ASEP/PSEP

<Replacement of the Single Solenoid>

(ROBO Cylinder)

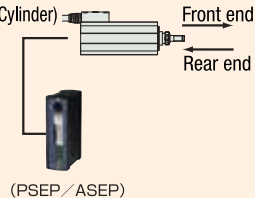


*Desired positions can be set for the front end and rear end.

Signal to Controller Input 0	Rod Movement
ON	Front End
OFF	Rear End

<Replacement of the Double Solenoid>

(ROBO Cylinder)



Signal to Controller Input 1	Signal to Controller Input 0	Rod Movement
ON	OFF	Front End
OFF	ON	Rear End

*The actuator can also be moved among 3 points by switching the parameters

0 mm
1
2
3
4



**ROBO
CYLINDER®**

MRC-UST-2-0609

www.intelligentactuator.com



Headquarters: 2690 W. 237th St Torrance, CA 90505

Chicago Office: 1261 Hamilton Parkway Itasca, IL 60143

Atlanta Office: 1220 Kennestone Circle, Suite E Marietta, GA 30066